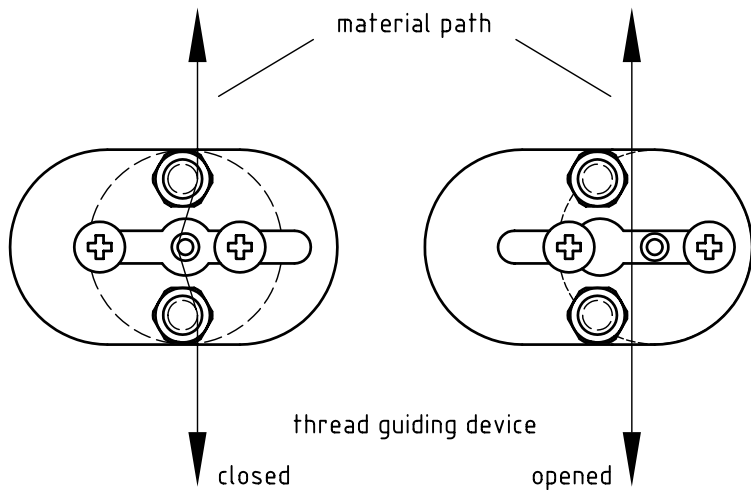
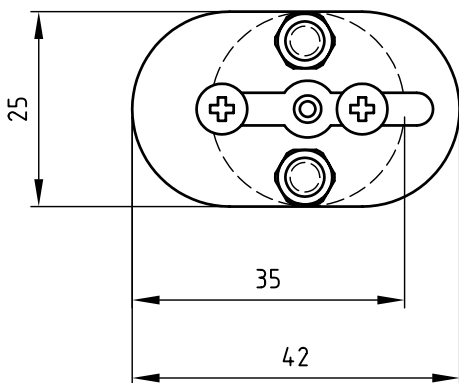
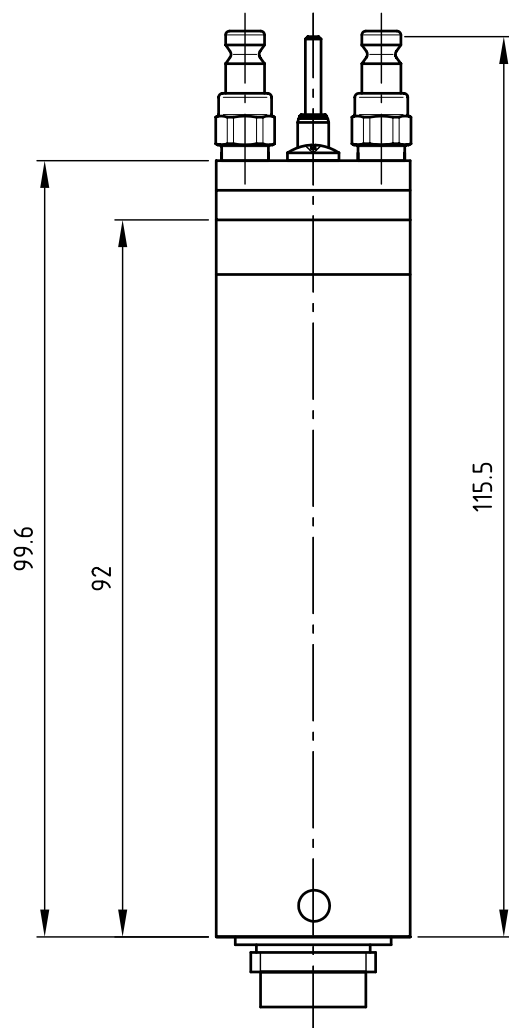
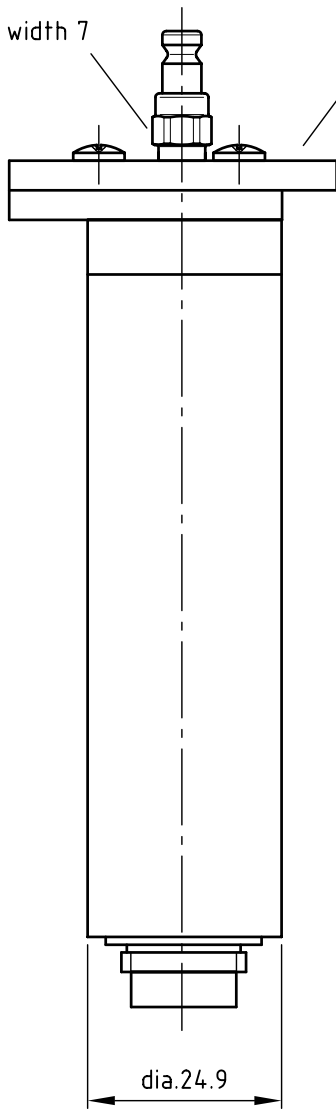



wrench width 7
 shiftable thread guiding device FFA



Types of thread guides:

- polished surface, e.g. for texturized yarns
- structured surface / matt finished, esp. for flat yarns

dimensions (mm)
 weight: approx. 100g

Schutzvermerk nach DIN 34 beachten		Allgemein- toleranz DIN 7168-f	Pr.Nr.	Maßstab 1:1 /A4	Mod.: 125.12	
				Werkstoff		
		Datum	Name	Tension sensor 125.12 with shiftable thread guiding device FFA		
		Erst. 10.05.05	ch			
		Gepr.				
		Norm				
		I.St. 02.08.05	ch	Z.-Nr.: K651932		
		 Honigmann GmbH Industrielle Elektronik 42289 Wuppertal				Blatt 1 v. 1Bl.
Zust.	Änderung	Datum	Name	Urspr.	Ers. für Z.Nr.:	ers. durch Z.Nr.: